

LIFT-RITE® Model LR0655 Hand Pallet Truck

Owner / Operators Instructions and Spare Parts Manual

DELIVERY INSPECTION

Visually inspect hand pallet truck frame components and hydraulic unit for damage during shipment by carrier. If damage is evident, notify delivering carrier immediately and file necessary claims. Test the hand pallet truck pump for operation. If the hydraulic pump does not respond to movement of the handle, an air lock may have developed during shipping. To remedy this, pull and hold the release lever then operate the pump several times. If the pump still fails to respond, see the troubleshooting guide.

SAFETY PROCEDURES

Never overload your hand pallet truck. Stay within rated capacity. Do not operate truck if it has been damaged or is not in proper working order.

Distribute the load evenly on the forks. Do not concentrate loads at one point or load one fork more than the other. Only handle loads on flat level surfaces. Do not use this truck with load on inclines or declines.

Never put your feet, hands or any other body part under the frame assembly.

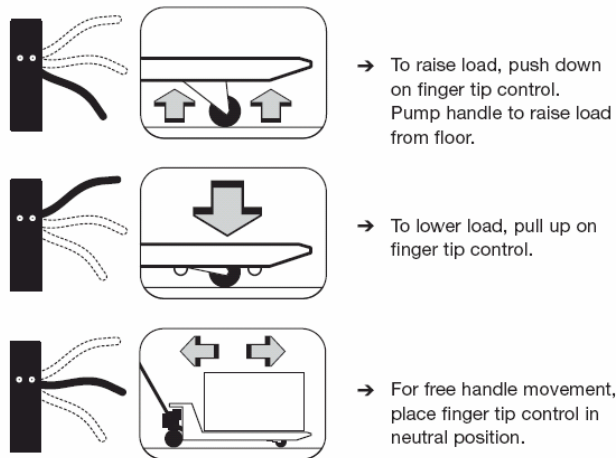
Do not allow your hand pallet truck to drop from one level to another.

Even a drop of 1" (25mm) more than doubles the effective load momentarily and results in a "Shock" which can bend or break components.

Always ensure load is stable before moving to eliminate opportunity for load shift.

When not in use, forks should be fully lowered to avoid injury.

OPERATING INSTRUCTIONS



NOTE:

The neutral position disengages the pump from the lifting mechanism. This frees the handle, which makes pulling loads much easier. Also the pump is not being subjected to shock pressures while the truck is in motion.

HAND PALLET TRUCK WARRANTY

Lift-Rite Inc. will guarantee this product against material or manufacturing defects provided the truck has not been abused and is used under normal conditions*. Lift-Rite Inc. will provide replacement components for those deemed defective by Lift-Rite Inc. under the terms listed below for the following model:

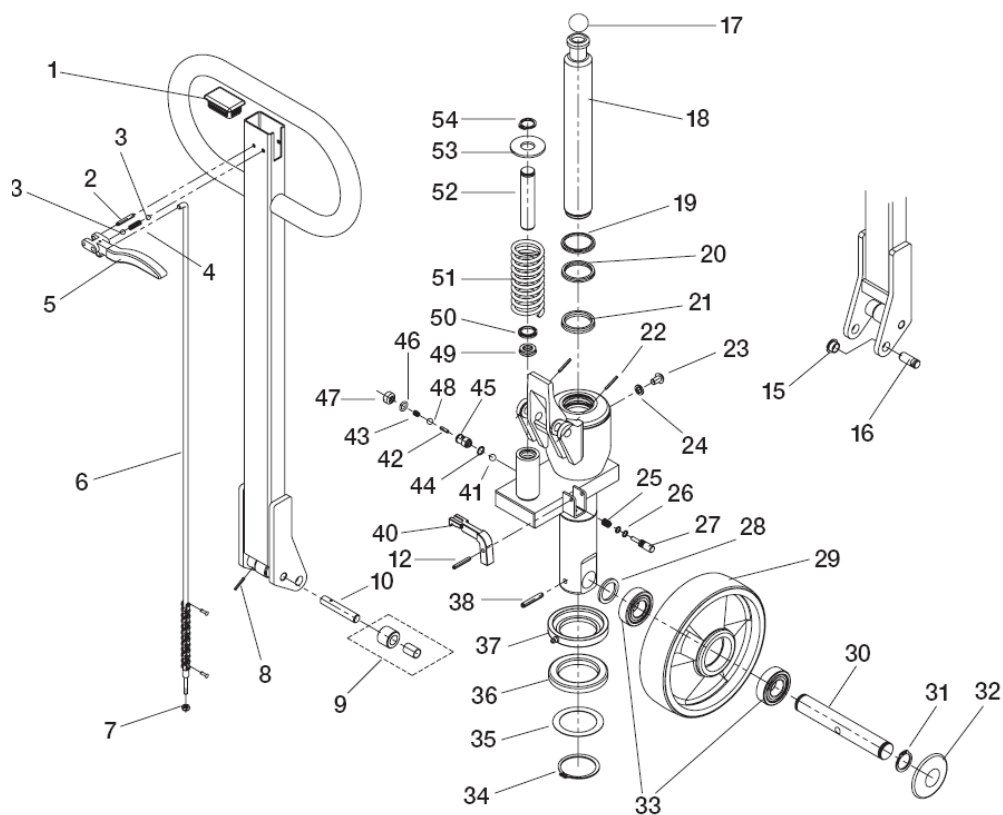
Models LR0655

The complete hydraulic pump and handle assembly is covered for (24) months. The chassis and associated components are covered for (12) months. Wearable components such as wheels, rollers, and bushings are covered for (6) months.

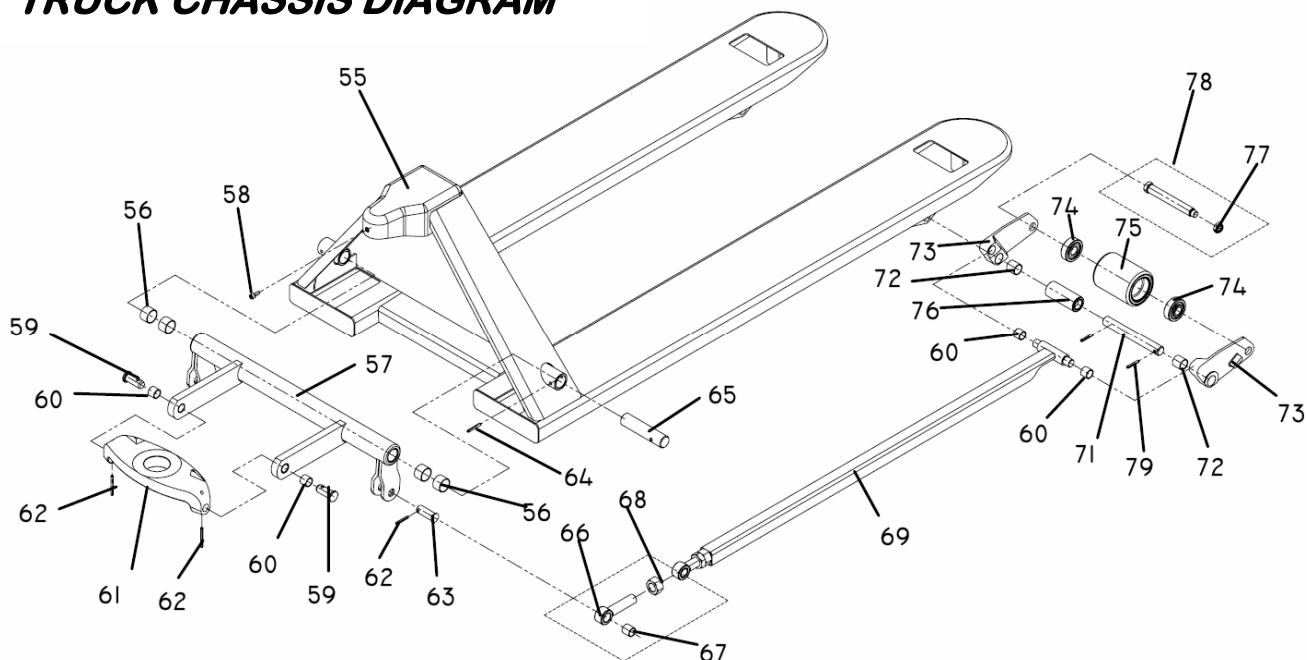
All warranty periods begin as of date of purchase. This warranty does not include labor or miscellaneous costs involved in the replacement of any components determined to be defective. In order to claim for warranty, you must supply the truck serial number, as well as date of purchase. *Any truck used under adverse conditions, such as fish, meat or poultry processing plants, tanneries, freezer applications, or any other application where the unit is operating in water or subjected to fluid or chemicals, is **NOT** covered under any warranty. Bent, twisted or misaligned forks are clear signs of abuse and not covered under warranty.

LIFTRITE® Model LR0655 Hand Pallet Truck

STANDARD HYDRAULIC PUMP DIAGRAM PN-20277



LR0655 MODEL HAND PALLET TRUCK CHASSIS DIAGRAM



LIFT-RITE® Model LR0655 Hand Pallet Truck

Item	Description	Part #	Qty
1	Handle cap	PL-20274E	1
2	Split Pin	PL-90569E	1
3	Ball	PL-10254M	2
4	Spring	PL-20274CM	1
5	Control Lever	PL-30274BDM	1
6	Control Rod assembly	PL-20274AC-M	1
7	Adjusting Nut	PL-90571	1
8	Split Pin	PL-20274RB	1
9	Roller complete with bushing	PL-20274RA	1
10	Pin	PL-20274P	1
	Complete Handle (Items 1-10)	PL-20276M	1
12	Split Pin	PL-10269	1
15	Bushing	PL-20306	2
16	Handle Bracket Pin	PL-20275	2
17	Ball	PL-10244	1
18	Main Lift Piston	PN-20243	1
19	Wiper Seal	PL-10245	1
20	Energized Seal	PL-10249	1
21	Main Seal	PL-10246	1
22	Split Pin	PL-20274S	2
23	Oil filler plug	PL-10267	1
24	Sealon	PL-10259A	1
25	Release Pin Spring	PL-10258	1
26	Release Pin O-Ring	PL-10259	2
27	Release Pin	PL-10260	1
28	Washer	PL-10239	2
29	Steer Wheel		
	Nylon complete w/bearings	PL-20236BN-B	2
	Polyurethane complete w/bearings	PL-20236B-B	2
	Steel complete w/bearings	PL-10236BS-B	2
30	Axle	PL-10240E	1
31	Snap Ring	PL-10237	2
32	Hub Cap	PL-10236C	2
33	Ball Bearing	PL-10238D	4
34	Snap Ring	PL-10235	1
35	Thrust Washer	PL-10234A	1
36	Standard Thrust Bearing	PL-10234	1
37	Thrust Collar	PL-20233	1
38	Split Pin	PL-20242	1
40	Release Lever	PL-10268	1
41	Ball	PL-10261A	1
42	Split Pin	PL-10263	1

Item	Description	Part #	Qty
43	Plug Bolt Spring	PL-10264	1
44	O-Ring	PH-10256	1
45	Ball Valve	PL-10262	1
46	Plug Bolt O-Ring	PL-10265	1
47	Plug Bolt	PL-10266	1
48	Ball	PL-10261	1
49	Pump Piston Seal	PL-10252	1
50	Pump Piston Wiper Ring	PL-10251	1
51	Handle Return Spring	PL-20253	1
52	Pump Piston Pin	PL-10250A	1
53	Pump Piston Washer	PL-10250B	1
54	Snap Ring	PL-10250C	1
	Pump Piston Complete	PL-10250	1
55	Chassis (Specify length, width & capacity)	PN-20200	1
56	Torsion Bar Bushing	PN-20203A	4
57	Torsion Bar		
	20.5" wide truck	PN-20201	1
	27" wide truck	PN-20202	1
58	Lock bolt	PN-10232	1
59	Thrust Plate Shoulder Pin	PL-30207	2
60	Bushing	PL-20206	6
61	Thrust Plate	PN-30231	1
62	Split Pin	PN-20269B	4
63	Eye-bolt Pin	PN-20227	2
64	Split Pin	PN-20269A	2
65	Bulkhead Eye Pin	PN-20204	2
66	Eye-bolt	PN-20226	2
67	Bushing	PN-20226A	2
68	Jam Nut	PN-10224AF	2
69	Push Bar		
	36" fork length (5,500 lbs)	PN-20224X36	2
	42" fork length (5,500 lbs)	PN-20224X42	2
	48" fork length (5,500 lbs)	PN-20224X48	2
71	Fork Pin	PN-20219	2
72	Bushing	PN-20203	4
73	Lever Arm Assembly w/ bushings	PN-20212	2
74	Load Roller Bearing	PL-20214	4
75	Load Roller		
	Nylon complete w/ bearings	PL-20210BN-B	2
	Polyurethane complete w/bearings	PL-20210P-B	2
	Steel complete w/bearings	PL-20210S-B	2
76	Exit Roller	PN-20220	2
77	Lock Nut	PL-10218	2
78	Axle Assembly	PL-20215	2
79	Split Pin	PN-20269	4
	Replacement kits		
	Pump assembly	PN-20277	
	Seal Kit	PL-20278	
	Valve Kit	PL-10279	
	Complete Pump Repair Kit	PL-20280	

LIFTRITE® Model LR0655 Hand Pallet Truck

TROUBLE SHOOTING

Condition	Possible cause	Action
- Pump does not lift load	- An air lock in the hydraulic system	- Pull up on finger tip control and hold while pumping handle several times to bleed air from system.
- Lifting, neutral, and lowering does not function properly	- Chain anchor adjustment required	- Turn nut (PL-10271) on chain anchor clockwise until pumping action while in neutral does not raise forks.
- Forks raise and sink with pump action	- Dirt or foreign particle caught in cone valve seat	- Pull up on finger tip control and hold while pumping handle several times.
- Pump does not lift load to complete raised height	- Pump is low on oil due to oil leak.	- Refer to procedure for adding hydraulic oil in maintenance section.
- Forks are not lowering all the way	- Push bars need adjustment	- Refer to push bar linkage adjustment in the maintenance section.

MAINTENANCE

Lubrication

All pivot points are equipped with permanently lubricated bushings and bearings. To increase bearing life, it is recommended that a few drops of light machine oil be applied at each pivot point every 6 months. The thrust plate is equipped with a grease zerk. This should be greased every 6 months.

Hydraulic system

Your hydraulic system is maintenance free. Do not add hydraulic oil unless there is, or has been a leak. Use Premium HVI hydraulic oil or equal. Other oils, fluids or solvents can damage your hydraulic system. If additional oil is required, position forks in lowered position. Remove oil level plug (PL-10267). Refill with hydraulic oil to plug hole level. Replace oil level plug.

Push bar linkage adjustment

If the forks do not rise evenly at the tips, or the roller levers begin to drag on the floor the following adjustment is necessary:

- Turn the hand pallet truck over so that the under side of the forks are accessible.
- Remove one split pin (PN-20269B) with 3/16" punch.
- Remove pin (PN-20227) from bracket.
- Adjust eye bolts (PN-20226). Turn counter-clockwise to raise fork tips and clockwise to lower fork tips
- Replace pin (PN-20227) through eye bolt and replace split pin (PN-20269B).
- When adjusted properly the forks should be 3" low height from ground level in the lowered position (LR0655 Model).

