

LIFT-RITE®

Owner's Manual, Operating Instructions Manual, and Replacement Parts Manual

Lift-Rite Model Easy-Lift

Serial Number 5584320-22 and up



This publication, 1130684D, applies to the Lift-Rite Model Easy-Lift and to all subsequent releases of this product until otherwise indicated in new editions. Changes occur periodically to the information in this publication.

To order additional copies of this manual, part number 1130684D, contact your local authorized Lift-Rite Sales and Service Center.

If you need assistance with your lift truck, contact your local authorized Lift-Rite Sales and Service Center.

For more information please visit www.liftright.com

©2022 Lift-Rite

TABLE OF CONTENTS

BEFORE YOU BEGIN	2
DELIVERY INSPECTION	2
SAFETY PROCEDURES	3
OPERATING INSTRUCTIONS	4
MAINTENANCE	4
DAILY INSPECTION	4
Model Easy-Lift	6
EASY-LIFT TRUCK WARRANTY	8
SELECTED OSHA REGULATIONS FOR LIFT TRUCKS	9

BEFORE YOU BEGIN

Always follow your facility's rules regarding wearing Personal Protective Equipment such as safety shoes and protective glasses whenever operating, working with, or assembling or dismantling hand pallet trucks.

DELIVERY INSPECTION

Visually inspect frame components and lifting mechanism for damage during shipment by carrier. If damage is evident, notify delivering carrier immediately and file necessary claims.

SAFETY PROCEDURES

(Read and understand prior to using this product)

- Read and understand the contents of this manual prior to using this piece of equipment.
- Read and obey all labels on this product. If you have any questions about these, ask your supervisor.
- Never overload your Easy-Lift; stay within the rated capacity depicted on the specification tag.
- Do not operate the truck if it has been damaged or is not in proper working order.
- Distribute the load evenly on the platform and within the specified load center.
- Only handle loads on flat level surfaces. Do not use a loaded truck on inclines or declines.
- Never put your feet, hands, or any other body part under the frame assembly, platform, or load.
- Always make sure that the load is stable before moving to eliminate opportunity for load shift.
- When not in use, the platform should be fully lowered to avoid injury.
- Do not get oil or grease on the winch friction disc, as this could allow the load to slip or fall.
- Obey crank rotation decals and operating instructions.
- Do not use this lift as a personnel lift.
- Never let anyone stand or ride on the truck frame or platform.
- Inspect the cable, winch, and frame for excessive wear or damage before each use.
- A loud clicking sound from the ratchet must be heard when lifting a load. If a loud clicking sound is not heard, do not use.
- Never release the crank handle unless the ratchet pawl is fully engaged and the load is supported.
- Never leave a weight hanging from the winch while the winch is unattended, as another person may attempt to operate the winch, thereby creating an unsafe condition.
- Move loads only with the platform in the fully lowered position.
- Failure to follow these safety procedures may result in property damage, bodily injury, and/or death.

OPERATING INSTRUCTIONS

- Push or pull lift by firmly grabbing the loop handle with the platform in the lowered position.
- To LIFT a load, turn the crank handle clockwise. The ratchet **MUST** make a loud clicking noise.
- To LOWER a load, turn the crank handle counterclockwise. No clicking is heard because the brake system is activated.

MAINTENANCE

- Do not get oil or grease on the friction disks. This could allow the load to slip and fall.
- Maintain a film of automotive type grease on all gear teeth, and to the OD of drum bearing at all times.
- Keep the ratchet pawl pivot, bushings, and pinion threads lubricated with automotive engine oil at all times.

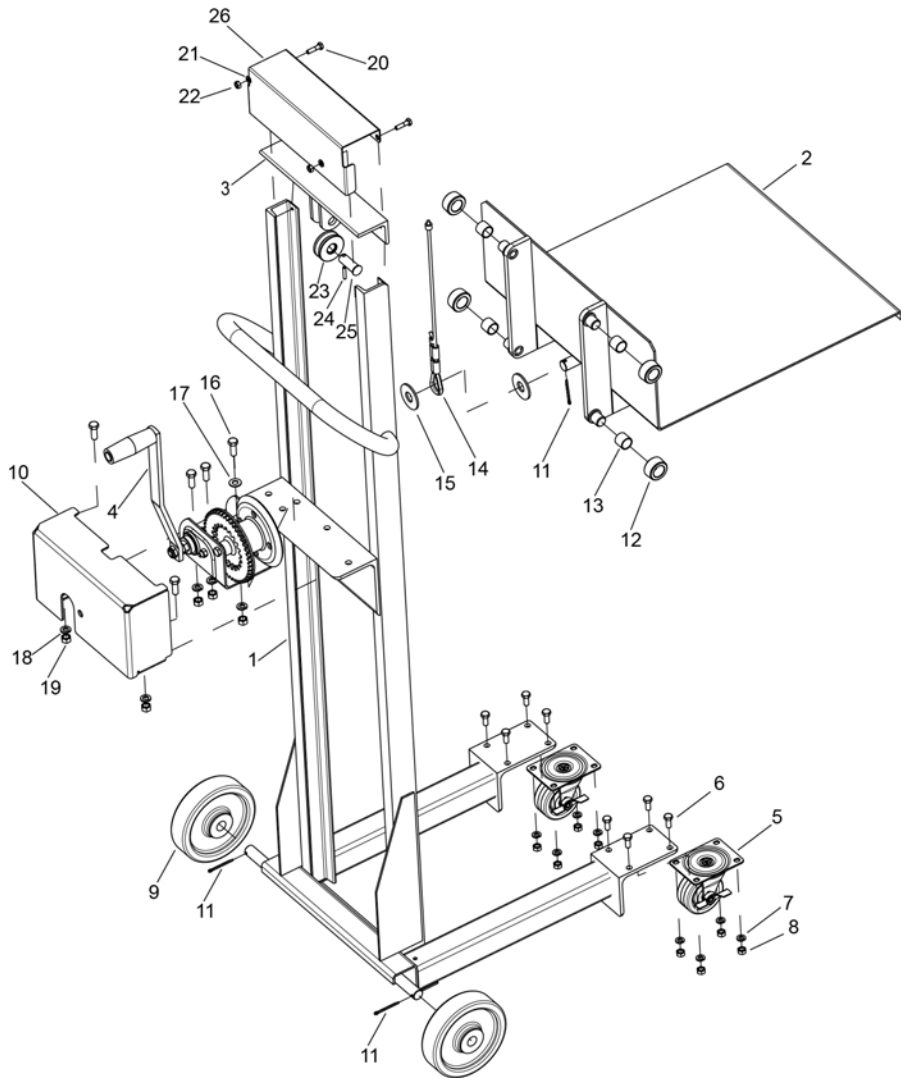
DAILY INSPECTION

At the start of your shift, check the items listed below. Report any malfunction or unsafe conditions to your supervisor. Do not use this product until it is repaired.

- Check the cable, friction disks, and gear teeth for excessive wear.
- Check the wheels and casters for excessive wear or damage, and remove debris.
- Excessive wear is an indication that the component requires replacement.
- Inspect fasteners for proper tightness.

THIS PAGE LEFT BLANK INTENTIONALLY

Model Easy-Lift



ITEM	QTY	PART NO.	DESCRIPTION
			Easy-Lift
1	1	PE-6001	Frame Assembly
2	1	PE-6002	Platform Assembly
3	1	AE-6004	Top Cross Member
4	1	PE-6003	Winch Assembly
5	2	1307057/002	Caster, Swivel 3 In.
6	8	MI-HEC.75Z	Bolt
7	8	11009-05	Washer
8	8	MI-NUTECZ	Nut
9	2	1275686	Wheel, 6 In.
10	1	1399538/001	Guard-Winch Assembly
11	3	MI-CPIN1.5Z	Pin, Cotter
12	4	PE-6011	Carriage Roller
13	4	PL-10203	Bushing
14	1	PE-6015	Rope, Wire
15	2	MI-FLATLA	Washer
16	5	MI-HFC1Z	Bolt
17	1	MI-FLATC1	Washer, Fender
18	5	MI-LOCKFZ	Washer
19	5	MI-NUTFCZ	Nut
20	2	MI-HDC1Z	Bolt
21	2	MI-LOCKDZ	Washer
22	2	MI-NUTDCZ	Nut
23	1	PE-6007	Pulley
	1	PL-20206	Bearing
24	1	PM-20269	Pin, Split
25	1	PL-20227	Pin, Eye Bolt
26	1	1405255/001	Guard-Top Pulley

EASY-LIFT TRUCK WARRANTY

This Easy-Lift Truck is warranted against defects in materials and workmanship for a period of six (6) months from the date of installation.

Components found to be defective by an authorized Lift-Rite Sales and Service Center during the warranty period will be replaced or repaired as indicated above. Replacement components installed during the defined period set forth above, are warranted for the balance of the applicable truck warranty period, or 90 days, whichever is longer. Additionally, freight charges for parts involved in the replacement or repair of a defective component will be paid by Lift-Rite, provided that the replacement or repair is made by an authorized Lift-Rite Sales and Service Center. Labor or miscellaneous costs involved in the replacement of any components determined to be defective are not covered. Local taxes, if any, are excluded.

This warranty is void in the event of defects or damage caused by misuse, abuse, or accident.

This warranty does not cover oil leaks, adjustments, or loose hardware.

Lift-Rite reserves the right to make changes and improvements in design without making changes to previously manufactured vehicles.

Notwithstanding any other language contained herein, this warranty is expressly voided without any further notice if any modification is made to the Lift-Rite equipment, or if additional components or devices are added to the Lift-Rite equipment, without prior approval having been granted in writing by Lift-Rite.

THIS WARRANTY IS IN LIEU OF ALL OTHER WARRANTIES, EXPRESSED, IMPLIED, OR STATUTORY. THERE ARE NO WARRANTIES OF MERCHANTABILITY OR FITNESS FOR A PARTICULAR PURPOSE. In no event shall Lift-Rite be liable for incidental, special, or consequential damages.

SELECTED OSHA REGULATIONS FOR LIFT TRUCKS

Note: Some or all of the following may not be applicable to your hand pallet lift truck.

The use of forklift trucks in the workplace is governed by various regulations. In the United States, the Federal Occupational Safety and Health Administration (OSHA) has issued regulations which cover the majority of workplaces.

In addition, several states have implemented regulations which apply instead of the Federal regulations.

Check with your local OSHA office or provincial Labor Bureau to confirm which regulations govern your workplace.

Because of their wide applicability, this section of your manual lists several parts of the Federal OSHA regulations that might be of particular importance to your workplace.

The full text of the Federal regulations can be found in the Code of Federal Regulations at 29 CFR Section 1910.178.

The following citations are followed by a reference to the appropriate subparagraph of the regulations.

- Modifications and additions which affect capacity and safe operation shall not be performed by the customer or user without manufacturers prior written approval. Capacity, operation and maintenance instruction plates, tags or decals shall be changed accordingly. (a) (3)
- The user shall see that all nameplates and markings are in place and are maintained in a legible condition. (a) (6)
- The employer shall ensure that each powered industrial truck operator is competent to operate a powered industrial truck safely, as demonstrated by the successful completion of the training and evaluation specified in this paragraph. (l) (1) (i)
- Prior to permitting an employee to operate a powered industrial truck (except for training purposes), the employer shall ensure that each operator has successfully completed the training required by this paragraph. (l) (1) (ii)
- Trainees may operate a powered industrial truck only under the direct supervision of persons who have the knowledge, training, and experience to train operators and evaluate their competence and where such operation does not endanger the trainee or other employees. (l) (2) (i) (A) (B)
- Training shall consist of a combination of formal instruction (e.g. lecture, discussion, interactive computer learning, videotape, written material), practical training (demonstrations performed by the trainer and practical exercises performed by the trainee), and evaluation of the operator's performance in the workplace. (l) (2) (B) (ii) [Editorial Note: For required training program content, refer to (l) (3) (i) (A-M) and (l) (3) (ii) (A-I).]
- Refresher training, including an evaluation of the effectiveness of that training, shall be conducted as required by paragraph (l) (4) (ii) to ensure that the operator has the knowledge and skills needed to operate the powered industrial truck safely. (l) (4) (i)
- An evaluation of each powered industrial truck operator's performance shall be conducted at least once every three years. (l) (4) (iii)
- The employer shall certify that each operator has been trained and evaluated as required by this paragraph (l). The certification shall include the name of the operator, the date of the training, the date of the evaluation, and the identity of the person(s) performing the training or evaluation. (l) (6)
- The employer shall prohibit arms or legs from being placed between the uprights of the mast or outside the running lines of the truck. (m) (4)
- Brakes shall be set and wheel blocks shall be in place to prevent movement of trucks, trailers or railroad cars while loading or unloading. Fixed jacks may be necessary to support a semitrailer when the trailer is not coupled to a tractor. The flooring of trucks, trailers, and railroad cars shall be checked for breaks and weakness before they are driven onto. (m) (7)
- Only approved industrial trucks shall be used in hazardous locations. (m) (11)

- All traffic regulations shall be observed, including authorized plant speed limits. A safe distance shall be maintained approximately three truck lengths from the truck ahead, and the truck shall be kept under control at all times. (n) (1)
- The driver shall be required to slow down and sound the horn at cross aisles and other locations where vision is obstructed. If the load being carried obstructs forward view, the driver shall be required to travel with the load trailing. (n) (4)
- Under all travel conditions the truck shall be operated at a speed that permits it to be brought to a stop in a safe manner. (n) (8)
- Stunt driving and horseplay shall not be permitted. (n) (9)
- If at any time a powered industrial truck is found to be in need of repair, defective, or in any way unsafe, the truck shall be taken out of service until it has been restored to safe operating condition. (p) (1)
- Any power-operated industrial truck not in safe operating condition shall be removed from service. All repairs shall be made by authorized personnel. (q) (1)
- All parts of any such industrial truck requiring replacement shall be replaced only by parts equivalent as to safety with those used in the original design. (q) (5)
- Industrial trucks shall be examined before being placed in service, and shall not be placed in service if the examination shows any condition adversely affecting the safety of the truck. Such examination shall be made at least daily. Where powered industrial trucks are used on a round-the-clock basis, they shall be examined after each shift. Defects when found shall be immediately reported and corrected. (q) (7)

Part Kit Number

1151429

LIFRITE®