



**WARNING**

Do not use the hand pallet truck before reading and understanding this operating instructions.

**NOTE!**

Keep for future reference.

**Model LCF44 – Freezer Special**



**Operating Instructions / Parts List**

**Galvanised Pallet Truck**

## ATTENTION:

1. The waste packages should be sorted and put into solid dustbins according to the materials and be collected disposal by local special to applicable law. To avoid pollution, it's forbidden to throw away the wastes randomly.
2. To address leaks that could occur during the use of the products, the user should prepare some absorbable materials (scraps of wooden or dry duster cloth) to absorb the leaking oil in time. To avoid additional pollution to the environment, the used absorbable materials should be handed in to special departments in terms to applicable law.

Thank you for using our pallet trucks. Your pallet truck is made of high quality steel and is designed for the horizontal lifting and transport of loads on a pallet or standardized containers on a level, fixed base. For your safety and correct operation, please carefully read this instruction before using it.

**NOTE:** All of the information reported herein is based on data available at the moment of printing. We reserve the right to modify our own products at any moment without notice and liability in any sanctions. So, it is suggested to always verify possible updates and changes.

## 1. GENERAL SPECIFICATIONS

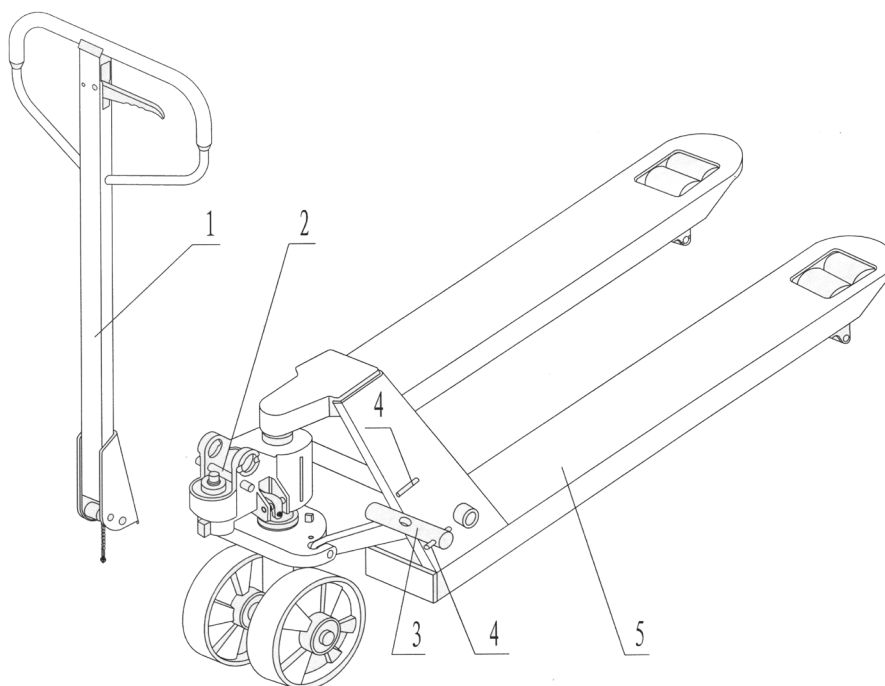
Capacity	(lb)	4400
Maximum. Fork Height (in)		7.9( or 7.5 )
Minimum. Fork Height (in)		3.3( or 3.0 )
Fork Length	(in)	45.3 / 48.0
Width Overall Forks	(in)	20.5 / 21.3 / 27.0
Individual Fork Width	(in)	6.3
Load Wheel Diameter	(in)	Ø 3.1x2.8(or Ø 2.9 x 2.8) Nylon
Steering Wheel Diameter	(in)	Ø 7.9 (or Ø 7.1) Nylon

Special fork lengths are available in 31.5, 35.4, 37.4, 39.4.  
Materials and specifications are subject to change without notice.

## 2. ATTACHING DRAW-BAR TO PUMP UNIT

If you have purchased a wooden box of pallet trucks, some assembly is required. Certainly, you need some tools, a hammer, a pliers, a spanner, etc; and some parts, one axle with hole (105), two elastic pins (106) (**Note one is in the axle (105)**), these parts are placed in a plastic bag, which is attached to the draw-bar.

**NOTE:** The number of draw-bar and pump should be the same.



1. Draw-bar 2. Pin 3. Axle with hole 4. Elastic pin 5. Fork frame

Fig. 1

When attaching the handle, be sure to squat just behind the pallet truck. Then you:

**2.1** Insert the draw-bar onto the pump piston (303), then use a hammer to insert the axle with hole (105) into the hydraulic pump and draw-bar **from the right to left**. (See fig. 2 ).

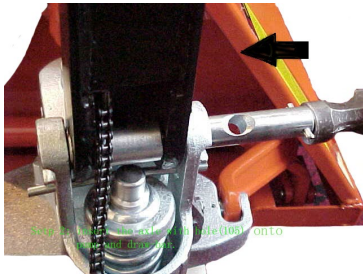


Fig. 2

**2.2** Let control handle(117) to the '**LOWER**' position, then pass the adjusting nut(104), adjusting bolt(103) and chain(102Z) through the hole of axle(105) with your hand (See fig. 3).

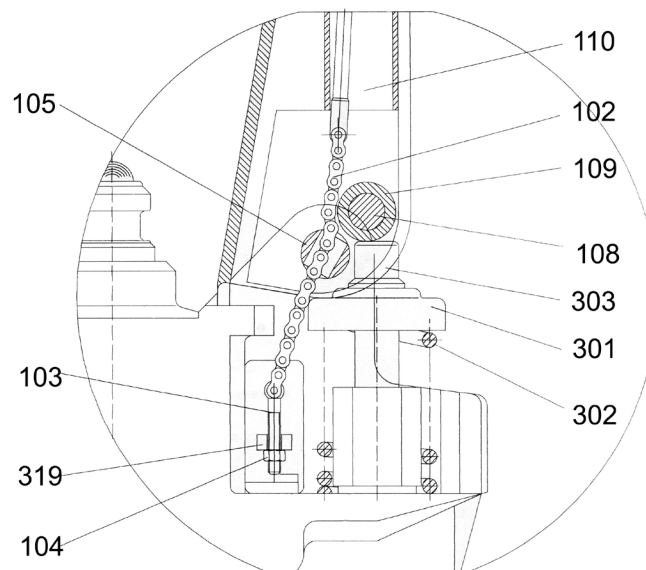


Fig. 3

**2.3** Press the draw-bar (110Z) down, take away the pin(#2) (See Fig. 1).

**2.4** Set the control handle (117) on '**RAISE**' position, then raise the lever plate (319) with the pin (#2) and insert the adjusting bolt (103) into the front slot of lever plate (319), note to keep the adjusting nut (104) on the under side of the lever plate.

**2.5** Use a hammer to tap another elastic pin (106) into the axle with hole (105).  
The draw-bar is now assembled to the pump.

### 3. ADJUSTING RELEASE DEVICE

On the draw-bar of this pallet truck, you can find the control handle(117) which can be adjusted in three positions :

<b>Raise</b>	-handle down
<b>Drive</b>	-handle in center position
<b>Lower</b>	-handle up, the lever moves back to the drive position when released.

If however they have been changed, you can adjust according to following step:

**3.1** If the forks elevate while pumping in the **DRIVE** position, turn the adjusting nut (104) on the adjusting bolt(103) or screw(318) clockwise until pumping action does not raise the forks and the

**DRIVE** position functions properly.

- 3.2 If the forks descend while pumping in the **DRIVE** position, turn the nut(104) or screw(318) counter-clockwise until the forks do not lower.
- 3.3 If the forks do not descend when the control handle (117) is in the **LOWER** position, turn the nut (104) or screw (318) clockwise until raising the control handle(117) lowers the forks. Then check the **DRIVE** position according to item 3.1 and 3.2 to be sure the nut (104) and screw(318) is in the proper position.
- 3.4 If the forks do not elevate while pumping in the **RAISE** position, turn the nut (104) or screw (318) counter-clockwise until the forks elevate while pumping in the **RAISE** position. Then check the **LOWER** and **DRIVE** position according to item 3.1, 3.2 and item 3.3.

## 4. MAINTENANCE

The pallet truck is largely maintenance-free.

### 4.1 OIL

Please check the oil level every six months. The oil can be hydraulic oil: ISO VG32, its viscosity should be 30cSt at 40<sup>o</sup> C, total volume is about 0.4lt.

### 4.2 TO REMOVE THE AIR

The air may come into the hydraulic oil because of transportation or pump in upside down position. It can cause that the forks do not elevate while pumping in the **RAISE** position. The air can be removed in the following way: set the control handle (117) in the **LOWER** position, then move the draw-bar up and down for several times.

### 4.3 DAILY CHECK AND MAINTENANCE

Daily check of the pallet truck can limit wear as much as possible. Special attention should be paid to the wheels and axles, as thread, rags, etc. may block the wheels. The forks should be unloaded and lowered in the lowest position when the job is over.

### 4.4 LUBRICATION

All bearings and shafts are provided with long-life grease at the factory. You only need provide with long-life grease at monthly intervals or after each time the truck is cleaned thoroughly to the lubrication points.

## 5 GUIDE TO SAFETY OPERATION

- 5.1 Operator should read all warning signs and instructions here and on the pallet truck before using this truck.
- 5.2 Do not use on a sloping ground.
- 5.3 Do not operate a pallet truck unless you are familiar with it and have been trained or authorized to do so.
- 5.4 Do not operate a pallet truck unless you have checked its condition. Give special attention to the wheels or rollers, the draw-bar unit, the fork unit, the lever plate, etc. .
- 5.5 To pull the truck, always move the control handle into the neutral position. This makes the draw-bar easier to move and depressurizes the pump section of the hydraulics. This preserves the hydraulic seals and the valve components. A long service life can be expected.
- 5.6 Never carry passengers on the pallet truck.
- 5.7 Wear required personal protective equipment.

5.8 When the goods have been transported, all people should be away from the forks for 600mm.

5.9 Do not load goods like fig. 5/B .

5.10 Do not load over maximum capacity.

5.11 At all times, the operator should be careful to operate the pallet truck.

## 6. TROUBLESHOOTING

No	Trouble	Cause	Fixing Methods
1	The forks can not be lifted up the maximum height.	The hydraulic oil is not enough.	Pour in the oil.
2	The forks can not be lifted up.	Without hydraulic oil. The oil has impurities. The nut (104) is too high, keep the pumping valve open. Air come into the hydraulic oil.	Fill in the oil. Change the oil. Adjust the nut(104) or screw (318) (see item 3.4) Remove the air.(see item 4.2)
3	The forks can not be lowered.	The piston rod(328) or pump (322) is deformed resulting from partial loading slanting to one side or over-loading. The fork was kept in the high position for long time with piston rod exposed, resulting in rusting and jamming of the rod. The adjusting nut (104) or screw (318) is not in correct position.	Replace the piston rod (328) or pump (322).  Keeping the fork in the lowest position if not using, and pay more attention to lubricate the rod.  Adjust the nut (104) or screw (318) (see item 3.3)
4	Leaks	Sealing parts worn or damaged. Some part cracked or worn.	Replace with the new one. Replace with the new one.
5	The forks lowered without the release valve working.	The impurities in the oil cause the release valve to be unable to close tight. Some parts of hydraulic system is cracked or bored. Air come into the oil. Sealing parts worn or damaged. The adjusting nut (104) or screw (318) is not in the correct position.	Replace with new oil.  Inspect and replace the worn parts.  Remove the air. (See item 4.2) Replace with the new one. Adjusting the nut (104) or screw (318). (See item 3.2)

**NOTE: DO NOT ATTEMPT TO REPAIR THE PALLET TRUCK UNLESS YOU ARE TRAINED AND AUTHORIZED TO DO SO.**

Fig. 4

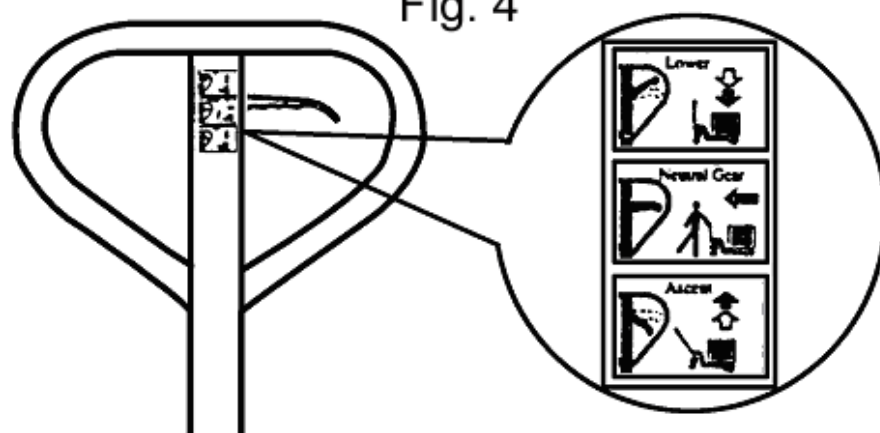
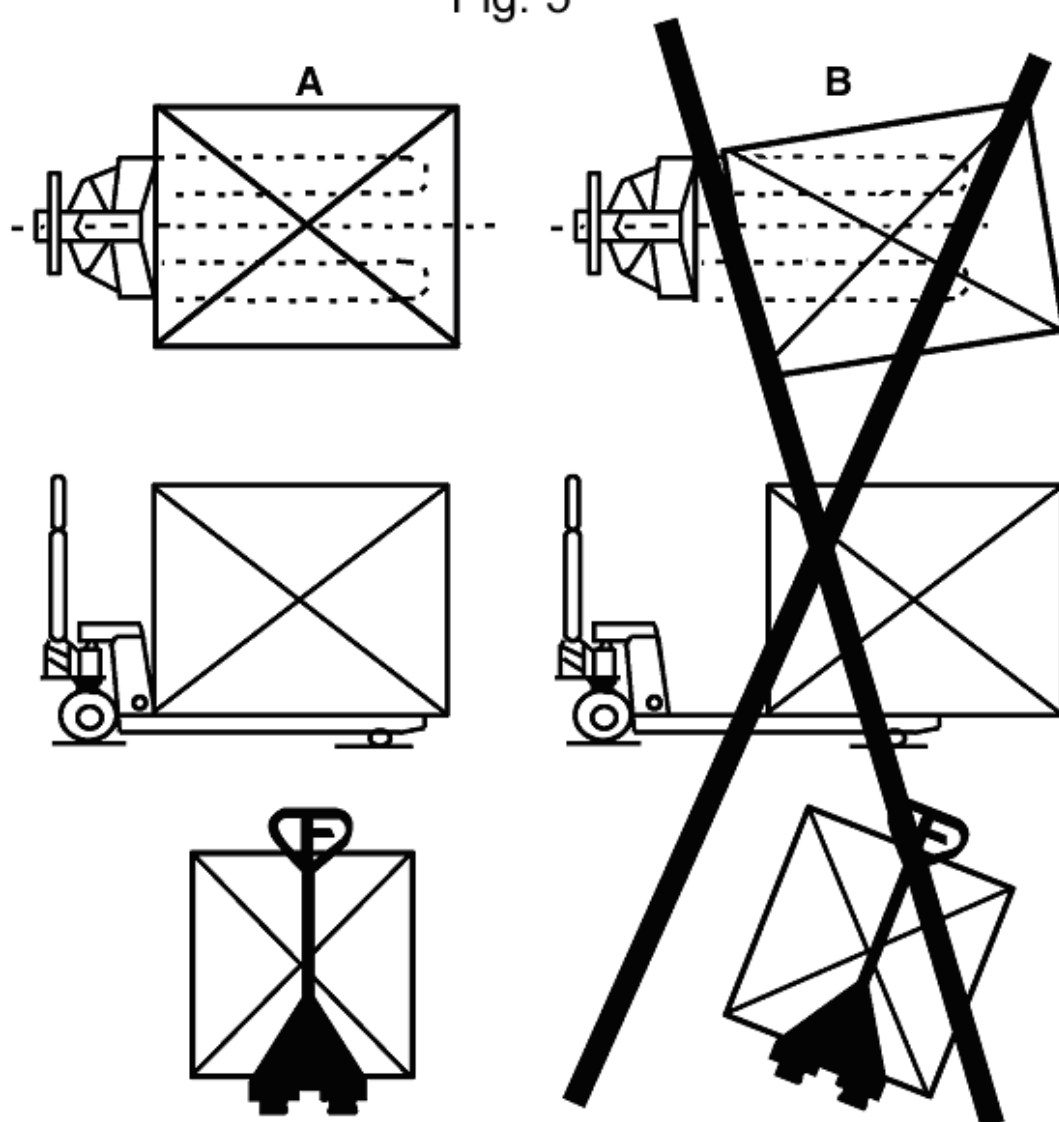
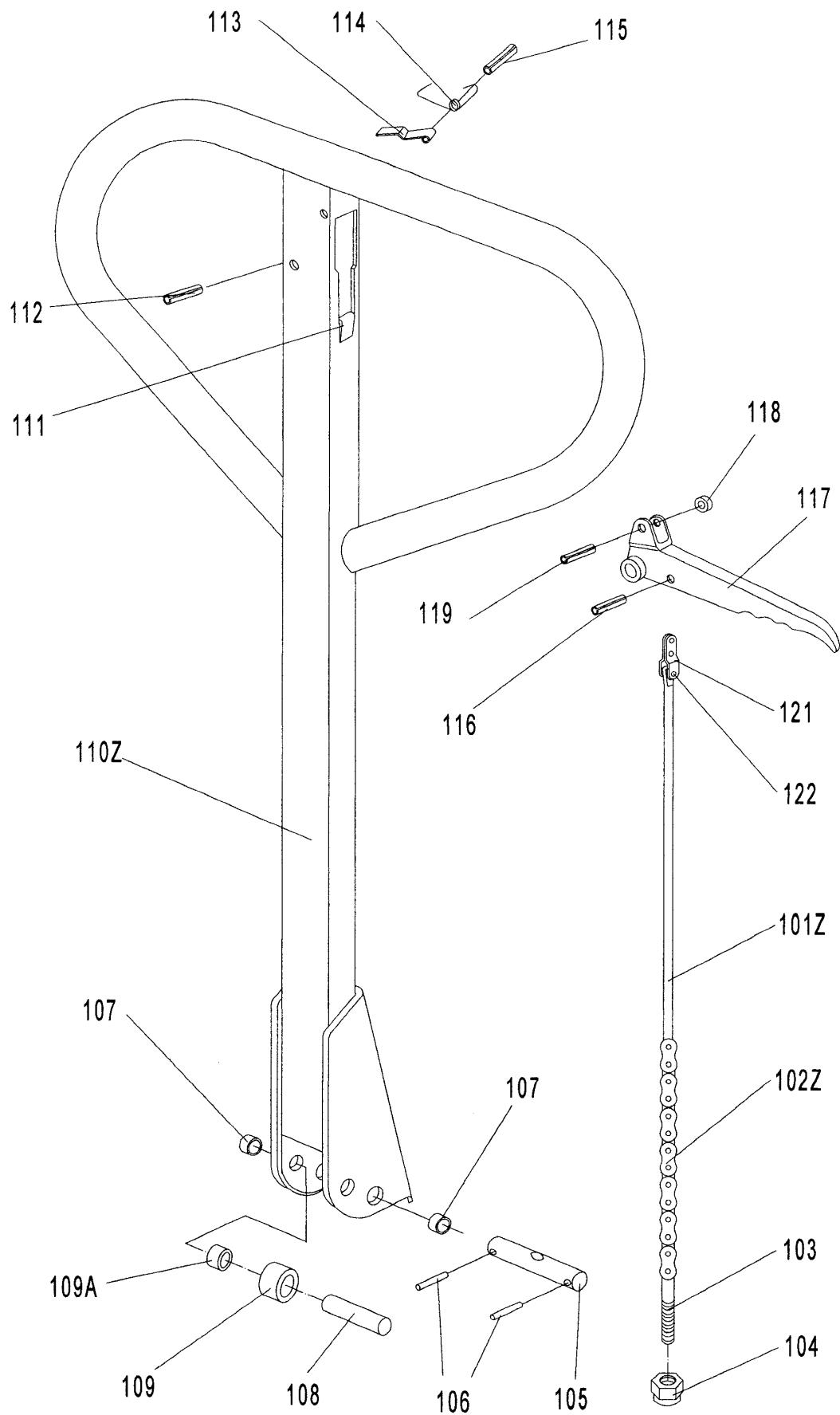


Fig. 5



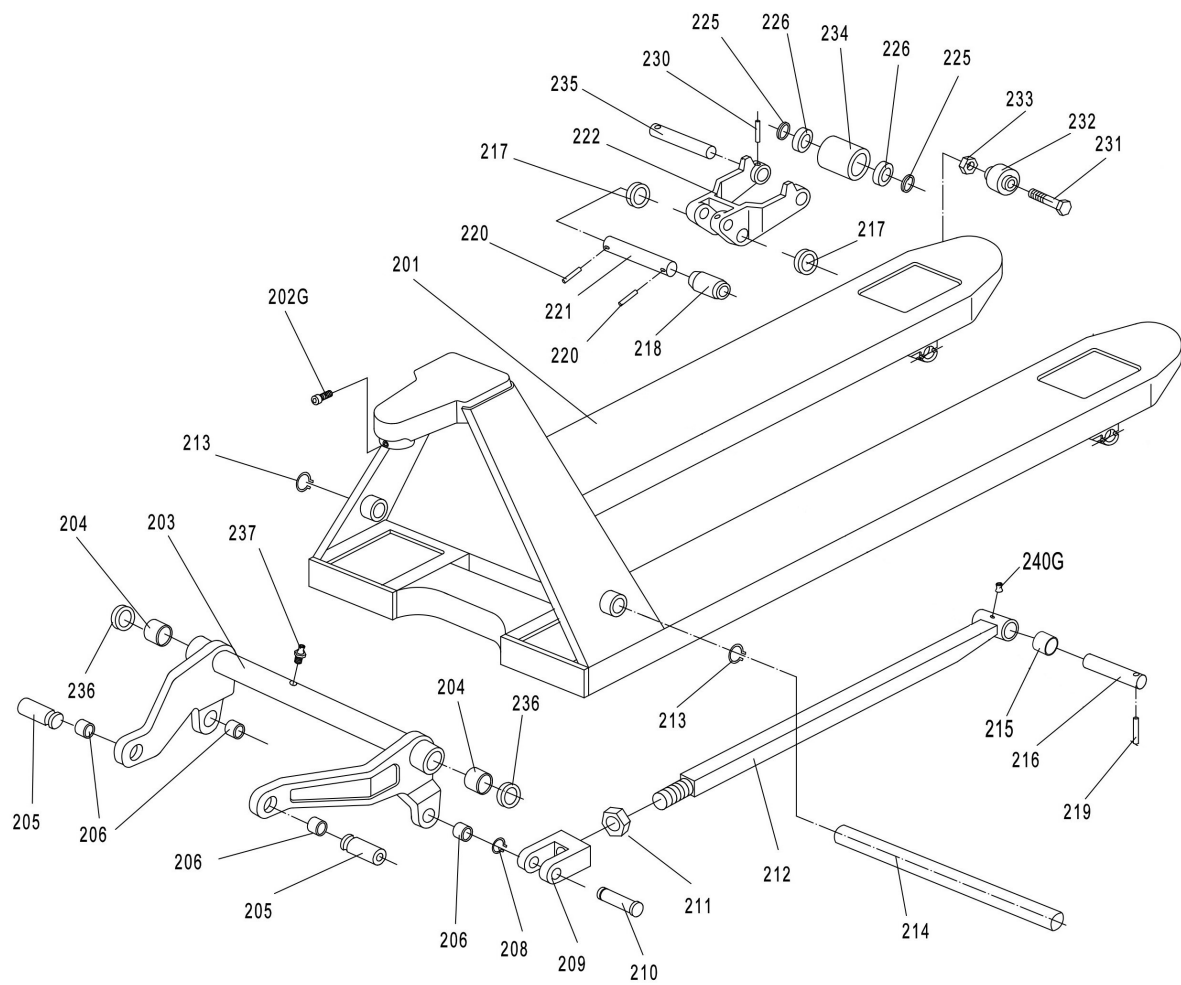






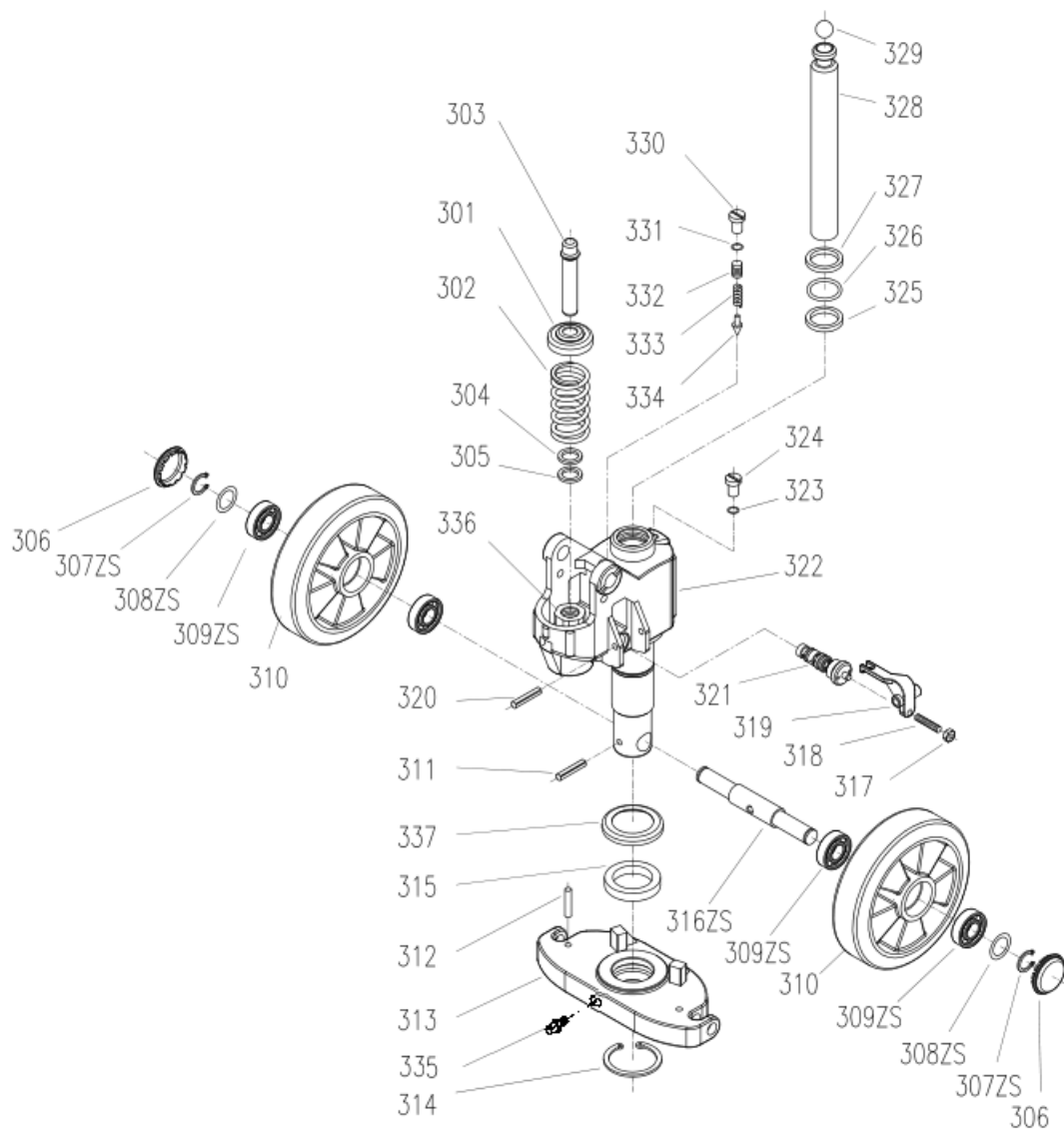
## LIST of DRAW-BAR

No.	Part Number	Description	Quantity
101Z	990-2481	Release Rod	1
102Z	990-2482	Chain	1
103	990-2483	Adjusting Bolt	1
104	990-2484	Adjusting Nut	1
105	990-2485	Axle with Hole	1
106	990-2486	Elastic Pin	2
107	990-2487	Bushing	2
108	990-2488	Roller Pin	1
109	990-2489	Pressure Roller	1
109A	990-2490	Bushing	1
110Z	990-2491	Draw-bar	1
111	990-2492	Stop Rubber	1
112	990-2493	Elastic Pin	1
113	990-2494	Blade Spring	1
114	990-2495	Spring	1
115	990-2496	Elastic Pin	1
116	990-2497	Elastic Pin	1
117	990-2498	Control Handle	1
118	990-2499	Roller	1
119	990-2500	Elastic Pin	1
121	990-2501	Pull Board	1
122	990-2502	Pin	1



## LIST of FORK FRAME

No.	Part No.	Description	Quantity
201	990-2503	Fork Frame	1
202G	990-2504	Bolt	1
203	990-2505	Rock - Arm	1
204	990-2506	Bushing	2
205	990-2507	Shaft	2
206	990-2508	Bushing	4
208	990-2509	Retaining Ring	2
209	990-2510	Joint	2
210	990-2511	Pin	2
211	990-2512	Nut	2
212	990-2513	Pushing Rod	2
213	990-2514	Retaining Ring	2
214	990-2515	Shaft	1
215	990-2516	Bushing	4
216	990-2517	Shaft	2
217	990-2518	Intermediate Roller	4
218	990-2519	Extending Roller	2
219	990-2520	Elastic Pin	2
220	990-2521	Elastic Pin	4
221	990-2522	Shaft	2
222	990-2523	Frame of Roller	2
225	990-2524	Washer	4
226	990-2525	Bearing	4
230	990-2526	Elastic Pin	2
231	990-2527	Bolt	2
232	990-2528	Enter Roller	2
233	990-2529	Locking Nut	2
234	990-2530	Loading Roller: Nylon wheel	2
235	990-2531	Shaft for Roller	2
236	990-2532	Washer	2
237	990-2533	Grease Cup	1
240G	990-2534	Grease Cup	2



## LIST of HYDRAULIC PUMP

No.	Part Number	Description	Quantity
301	990-2535	Spring Cap	1
302	990-2536	Spring	1
303	990-2537	Pump Piston	1
304	990-2538	Dust Ring	1
305	990-2539	Seal	1
306	990-2540	Dust Cover	2
307ZS	990-2541	Locking Ring	2
308ZS	990-2542	Washer	2
309ZS	990-2543	Bearing	4
310	990-2544	Steering Wheel	2
311	990-2545	Elastic Pin	1
312	990-2546	Elastic Pin	2
313	990-2547	Thrust Plate	1
314	990-2548	Retaining Ring	1
315	990-2549	Bearing	1
316ZS	990-2550	Shaft of loading Wheel	1
317	990-2551	Nut	1
318	990-2552	Screw	1
319	990-2553	Lever Plate	1
320	990-2554	Elastic Pin	1
321	990-2555	Valve Cartridge	1
322	990-2556	Pump Body	1
323	990-2557	Seal Washer	1
324	990-2558	Screw Plug	1
325	990-2559	Seal	1
326	990-2560	O – Ring	1
327	990-2561	Dust Ring	1
328	990-2562	Piston Rod	1
329	990-2563	Steel Ball	1
330	990-2564	Screw Plug	1
331	990-2565	O - Ring	1
332	990-2566	Bolt	1
333	990-2567	Spring	1
334	990-2568	Spindle of Safety Valve	1
335	990-2569	Grease Cup	1
336	990-2570	Cylinder	1
337	990-2571	Cover of Bearing	1