



Replacement Parts Manual

Lift-Rite Titan Series Hand Pallet truck
LCR55 and LCS55 Versions



SAFETY SHOES

Always wear safety shoes when working with hand pallet trucks.



PROTECTIVE GLASSES

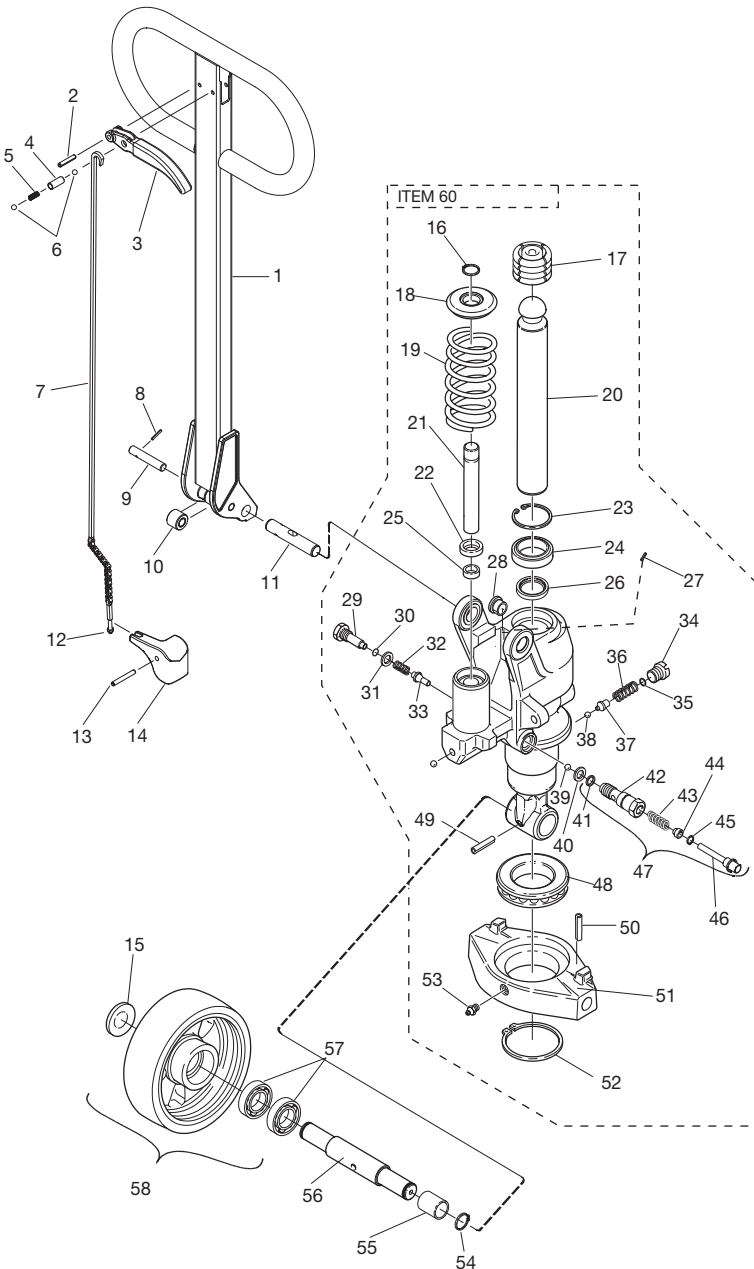
When assembling or dismantling a hand pallet truck, protective glasses must be worn to avoid personal injury.

OPERATOR'S RESPONSIBILITY

While operating a hand pallet truck always wear safety equipment and operate in a responsible manner to ensure a safe work area.



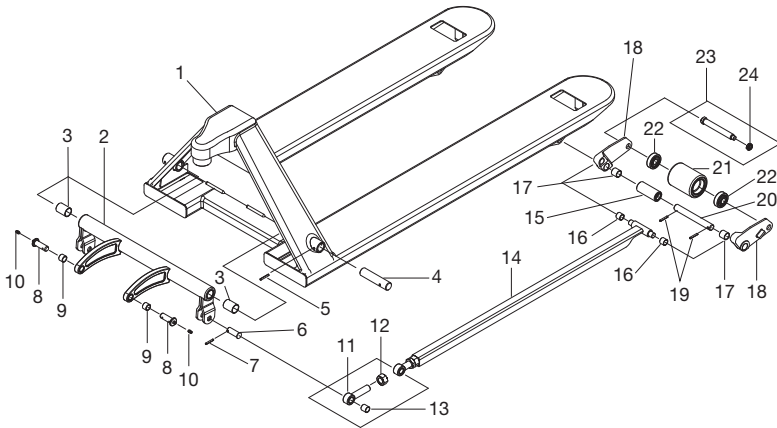
COMPLETE HYDRAULIC LIFT ASSEMBLY (PL-30277)



ITEM	DESCRIPTION	QTY	PART NO.
1	COMPLETE HANDLE (ITEMS 2-10)	1	PL-30276M
2	SPLIT PIN	1	20105
3	CONTROL LEVER	1	PL-40274BDM
4	CONTROL LEVER SLEEVE	1	54140
5	CONTROL LEVER SPRING	1	218182
6	CHROME BALL	2	20065
7	CONTROL ROD ASSEMBLY	1	215775
8	SPLIT PIN	1	20461
9	AXLE	1	47930
10	ROLLER W/ BUSHING	1	202755
11	AXLE	1	222750
12	ADJUSTING NUT	1	21094
13	LOCKING PIN	1	220312
14	LOWERING ARM	1	215128
15	COVER	2	156623
16	LOCKING RING	1	20043
17	SLEEVE	1	215803
18	WASHER	1	215282
19	SPRING	1	215156
20	PISTON	1	215030
21	PISTON	1	215286
22	SEALING RING	1	21060
23	LOCKING RING	1	20642
24	SEALING	1	20066
25	SEALING	1	215866
26	SEALING	1	215867
27	LOCKING PIN	1	20014
28	BUSHING	2	215913
29	SCREW	1	221586
30	O-RING	1	24213
31	WASHER	1	219201
32	SPRING	1	39106
33	VALVE CONE	1	223935
34	SCREW (OVERLOAD)	1	221232
35	O-RING (OVERLOAD)	1	22032
36	SPRING (OVERLOAD)	1	221227
37	GUIDE PIN (OVERLOAD)	1	221231
38	BALL (OVERLOAD)	1	22055
39	BALL	1	20065
40	WASHER	1	215288
41	O-RING	1	22032
42	VALVE BODY	1	223977
43	SPRING	1	47071
44	GUIDE	1	49513
45	U-RING	1	22318
46	PISTON	1	47051
47	LOWERING VALVE (COMPLETE)	1	215776
48	BALL BEARING	1	213056
49	LOCKING PIN	1	220312
50	LOCKING PIN	2	20001
51	THRUST PLATE	1	215092
52	LOCKING RING	1	21737
53	GREASE NIPPLE	1	27662
54	LOCKING RING	2	20019
55	SPACER	2	161637
(REQUIRED WITH 200965 ONLY)			
56	AXLE	1	220310
57	BEARING	4	22226
58	WHEEL COMPLETE		
	NYLON	2	251189
	POLY	2	160422
	POLY/STEEL	2	200965
	STEEL	2	160433
60	HYDRAULIC UNIT	1	220069
	REBUILD KIT	1	243772

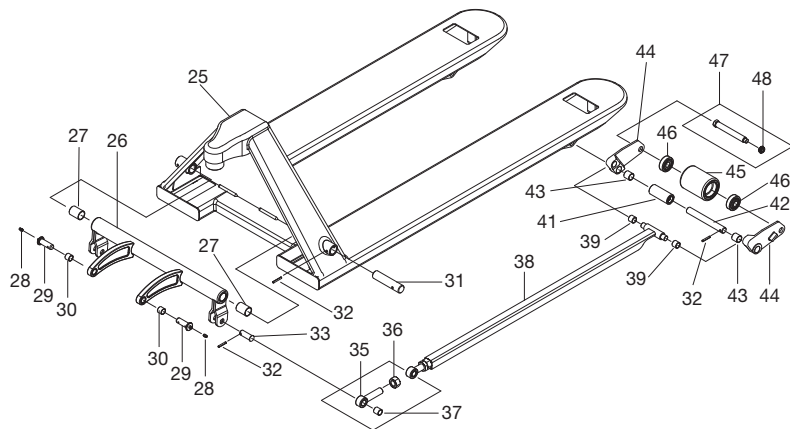


MODEL LCR55 CHASSIS DIAGRAM



ITEM	DESCRIPTION	QTY	PART NO.
1	CHASSIS (SPECIFY LENGTH & WIDTH)	1	PN-30200
2	TORSION BAR 20.5" WIDE TRUCK	1	PN-30201
	27" WIDE TRUCK	1	PN-30202
3	BUSHING	2	PN-20203A
4	BULKHEAD PIN	2	PN-20204
5	SPRING PIN	2	PN-20269A
6	EYE BOLT PIN	2	PN-20227
7	SPRING PIN	2	PN-20269B
8	THRUST PLATE PIN (W/ GREASE FITTING)	2	166701
9	BUSHING	2	PL-30206
10	GREASE FITTING	2	27662
11	EYE BOLT	2	PN-20226
12	JAM NUT	2	PN-10224AF
13	BUSHING	2	PN-20226A
14	PUSH BAR		
	36" LONG FORK	2	PN-20224X36
	42" LONG FORK	2	PN-20224X42
	48" LONG FORK	2	PN-20224X48
15	EXIT ROLLER	2	PN-20220
16	BUSHING	4	PL-20206
17	BUSHING	4	PN-20203
18	LEVER ARM ASSEMBLY W/ BUSHINGS	2	PN-20212
19	SPRING PIN	4	PN-20269
20	FORK PIN	2	PN-20219
21	LOAD ROLLER		
	NYLON W/ BEARINGS	2	PL-20210BN-B
	POLY W/ BEARINGS	2	PL-20210P-B
	STEEL W/ BEARINGS	2	PL-20210S-B
22	LOAD ROLLER BEARING	4	PL-20214
23	AXLE ASSEMBLY	2	PL-20215
24	LOCK NUT	2	PL-10218

MODEL LCS55 CHASSIS DIAGRAM



ITEM	DESCRIPTION	QTY	PART NO.
25	CHASSIS (SPECIFY LENGTH & WIDTH)	1	PL-30200
26	TORSION BAR (SPECIFY TRUCK WIDTH)	1	(CONSULT FACTORY)
27	BUSHING	2	PL-20203A
28	GREASE FITTING	2	27662
29	THRUST PLATE PIN (W/ GREASE FITTING)	2	166701
30	BUSHING	2	PL-30206
31	BULKHEAD PIN	2	PL-20204
32	SPRING PIN	6	PL-20269
33	EYE BOLT PIN	2	PL-20227
34	EYE BOLT	2	PL-20226
35	JAM NUT	2	PL-10224AF
36	BUSHING	2	PL-20226A
37	PUSH BAR (SPECIFY FORK LENGTH)	2	PL-20224X_
38	BUSHING	4	PL-20206
39	EXIT ROLLER	2	PL-20220
40	FORK PIN	2	PL-20219
41	BUSHING	4	PL-20203
42	LEVER ARM W/ BUSHINGS	2	PL-20212
43	LOAD ROLLER		
	NYLON W/ BEARINGS	2	PL-20210BN-B
	POLY W/ BEARINGS	2	PL-20210P-B
	STEEL W/ BEARINGS	2	PL-20210S-B
44	LOAD ROLLER BEARING	2	PL-20214
45	AXLE ASSEMBLY	2	PL-20215
46	LOAD ROLLER BEARING	2	PL-20214
47	AXLE ASSEMBLY	2	PL-20215
48	LOCK NUT	2	PL-10218



RECYCLING YOUR OLD LIFT-RITE PARTS



Chassis	Steel
Roller suspension	Steel and cast iron
Bushings	Brass
Grease fittings	Steel
Rollers	Nylon, polyurethane, steel
Hydraulic body	Cast iron
Thrust plate	Cast iron
Handle	Steel
Wheel	Nylon, polyurethane, steel
Bushings	Brass
Hydraulic oil	Disposal in accordance with local regulations
Assembly parts	Steel, brass, nylon

LIFFRITE®